



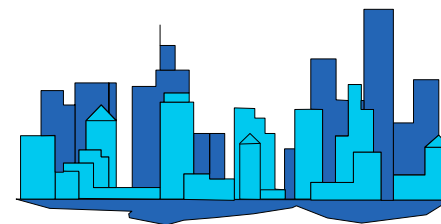
City of Phoenix

Monthly Count Of Actual Offenses Known To Police

Part 1 Crimes

By Uniform Crime Reporting (UCR) Classifications

2010 Calendar Year-To-Date



	JAN	FEB	MAR	1st QTR TOTAL	APR	MAY	JUN	2nd QTR TOTAL	JUL	AUG	SEP	3rd QTR TOTAL	OCT	NOV	DEC	4th QTR TOTAL	2010 YEAR TO DATE TOTAL
	Criminal Homicide	9	0	0	9	0	0	0	0	0	0	0	0	0	0	0	0
a. Murder and Non-Negligent Manslaughter	9	0	0	9	0	0	0	0	0	0	0	0	0	0	0	0	9
b. Manslaughter by Negligence	0	0	0	0	0	0	0	0	0	0	0	0	0	0	0	0	0
Forcible Rape	35	0	0	35	0	0	0	0	0	0	0	0	0	0	0	0	35
a. Rape by Force	32	0	0	32	0	0	0	0	0	0	0	0	0	0	0	0	32
b. Attempts to Commit Forcible Rape	3	0	0	3	0	0	0	0	0	0	0	0	0	0	0	0	3
Robbery	269	0	0	269	0	0	0	0	0	0	0	0	0	0	0	0	269
a. Firearm	128	0	0	128	0	0	0	0	0	0	0	0	0	0	0	0	128
b. Knife or Cutting Instrument	24	0	0	24	0	0	0	0	0	0	0	0	0	0	0	0	24
c. Other Dangerous Weapon	18	0	0	18	0	0	0	0	0	0	0	0	0	0	0	0	18
d. Strong-Arm (hands, fists, feet, etc.)	99	0	0	99	0	0	0	0	0	0	0	0	0	0	0	0	99
Aggravated Assault	368	0	0	368	0	0	0	0	0	0	0	0	0	0	0	0	368
Total Violent Crimes	681	0	0	681	0	0	0	0	0	0	0	0	0	0	0	0	681
Burglary	1,381	0	0	1,381	0	0	0	0	0	0	0	0	0	0	0	0	1,381
a. Forcible Entry	895	0	0	895	0	0	0	0	0	0	0	0	0	0	0	0	895
b. Unlawful Entry - No Force	422	0	0	422	0	0	0	0	0	0	0	0	0	0	0	0	422
c. Attempted Forcible Entry	64	0	0	64	0	0	0	0	0	0	0	0	0	0	0	0	64
Larceny - Theft	3,250	0	0	3,250	0	0	0	0	0	0	0	0	0	0	0	0	3,250
Motor Vehicle Theft	694	0	0	694	0	0	0	0	0	0	0	0	0	0	0	0	694
a. Autos	358	0	0	358	0	0	0	0	0	0	0	0	0	0	0	0	358
b. Trucks and Buses	301	0	0	301	0	0	0	0	0	0	0	0	0	0	0	0	301
c. Other Vehicles	19	0	0	19	0	0	0	0	0	0	0	0	0	0	0	0	19
d. Motorcycles	16	0	0	16	0	0	0	0	0	0	0	0	0	0	0	0	16
Arson	25	0	0	25	0	0	0	0	0	0	0	0	0	0	0	0	25
Total Property Crimes	5,350	0	0	5,350	0	0	0	0	0	0	0	0	0	0	0	0	5,350
TOTAL PART 1 CRIMES	6,031	0	0	6,031	0	0	0	0	0	0	0	0	0	0	0	0	6,031

Does not include "Unfounded" cases by UCR definition.



City of Phoenix

Monthly Count Of Actual Offenses Known To Police

Part 2 Crimes

By Uniform Crime Reporting (UCR) Classifications
2010 Calendar Year-To-Date



	JAN	FEB	MAR	1st QTR TOTAL	APR	MAY	JUN	2nd QTR TOTAL	JUL	AUG	SEP	3rd QTR TOTAL	OCT	NOV	DEC	4th QTR TOTAL	2010 YEAR TO DATE TOTAL
Forgery & Counterfeit*	235	0	0	235	0	0	0	0	0	0	0	0	0	0	0	0	235
Fraud	576	0	0	576	0	0	0	0	0	0	0	0	0	0	0	0	576
Embezzlement	44	0	0	44	0	0	0	0	0	0	0	0	0	0	0	0	44
Stolen Property	52	0	0	52	0	0	0	0	0	0	0	0	0	0	0	0	52
Vandalism	1,081	0	0	1,081	0	0	0	0	0	0	0	0	0	0	0	0	1,081
Weapons	77	0	0	77	0	0	0	0	0	0	0	0	0	0	0	0	77
Commercialized Vice	54	0	0	54	0	0	0	0	0	0	0	0	0	0	0	0	54
Sex Offenses	99	0	0	99	0	0	0	0	0	0	0	0	0	0	0	0	99
Narcotic Drug Laws	669	0	0	669	0	0	0	0	0	0	0	0	0	0	0	0	669
Opium	150	0	0	150	0	0	0	0	0	0	0	0	0	0	0	0	150
Marijuana	358	0	0	358	0	0	0	0	0	0	0	0	0	0	0	0	358
Synthetics	148	0	0	148	0	0	0	0	0	0	0	0	0	0	0	0	148
Non-Narcotics	13	0	0	13	0	0	0	0	0	0	0	0	0	0	0	0	13
Gambling	0	0	0	0	0	0	0	0	0	0	0	0	0	0	0	0	0
Bookmaking	0	0	0	0	0	0	0	0	0	0	0	0	0	0	0	0	0
Lottery	0	0	0	0	0	0	0	0	0	0	0	0	0	0	0	0	0
Other Gambling	0	0	0	0	0	0	0	0	0	0	0	0	0	0	0	0	0
Offenses Against Family	36	0	0	36	0	0	0	0	0	0	0	0	0	0	0	0	36
Driving Under Influence*	597	0	0	597	0	0	0	0	0	0	0	0	0	0	0	0	597
Liquor Laws	118	0	0	118	0	0	0	0	0	0	0	0	0	0	0	0	118
Disorderly Conduct	355	0	0	355	0	0	0	0	0	0	0	0	0	0	0	0	355
Vagrancy	2	0	0	2	0	0	0	0	0	0	0	0	0	0	0	0	2
Other (Except Traffic)	612	0	0	612	0	0	0	0	0	0	0	0	0	0	0	0	612
All Traffic	177	0	0	177	0	0	0	0	0	0	0	0	0	0	0	0	177
Curfew	17	0	0	17	0	0	0	0	0	0	0	0	0	0	0	0	17
Runaways	323	0	0	323	0	0	0	0	0	0	0	0	0	0	0	0	323
Misdemeanor Assaults	961	0	0	961	0	0	0	0	0	0	0	0	0	0	0	0	961
TOTAL PART 2 CRIMES	6,085	0	0	6,085	0	0	0	0	0	0	0	0	0	0	0	0	6,085

Does not include "Unfounded" cases by UCR definition.